

Flat

# 1 BEDROOM APARTMENT SUITABLE FOR 1 PERSON ONLY - MARYLEBONE

PCM

## £2,150

### FEATURES

- 1 Bedroom apartment (1 person only)
- Private gated secure entrance
- Modern fitted kitchen
- Open plan living room
- Wood flooring
- In the heart of Marylebone Village.
- Very Close to All Transport links.
- Suit a Single Professional or Student



**SPACE**  
RESIDENTIAL

# 1 Bedroom Flat located in London

Call us on

**0208 906 2222**

[info@spaceresidential.com](mailto:info@spaceresidential.com)

[spaceresidential.com](https://spaceresidential.com)

**Council Tax Band**

**Exempt**

Space Residential are pleased to offer a bright, modern 1 bedroom self-contained apartment, located in the heart of Marylebone Village.

The entrance to the flat is approached via private steps with its own gate, leading you to the front door.

The apartment is open plan with a fully equipped high-end kitchen and living room area with wood flooring, and modern furniture.

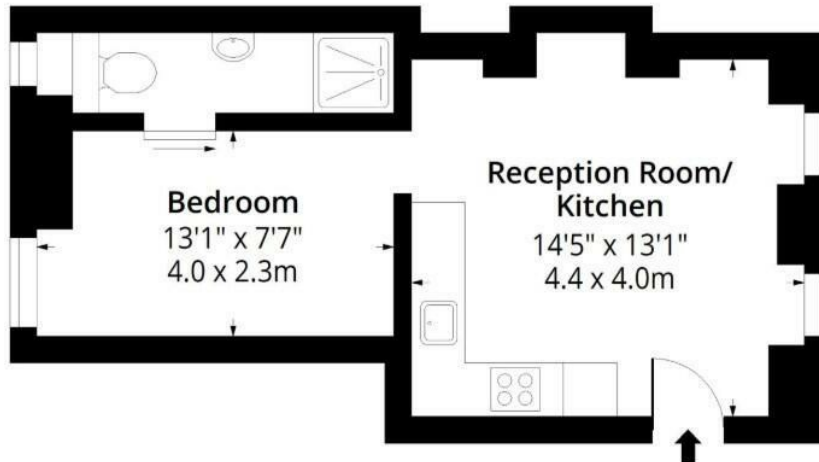
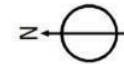
A doorway leads to a separate bedroom area and bathroom with a walk-in shower.

Ideally positioned within a few minutes walk from Baker Street tube and the open spaces of Regent's Park.

Marylebone High Street is a mere 25 metres from your front door with its wonderful variety of high-end retailers, restaurants and wine bars.

**Nottingham Street, W1U**

Approx. Gross Internal Area 346 Sq Ft - 32.14 Sq M



**Lower Ground Floor**

Floor Area 346 Sq Ft - 32.14 Sq M

Energy Efficiency Rating		
	Current	Potential
Very energy efficient - lower running costs		
(92 plus) A		
(81-91) B		
(69-80) C		
(55-68) D		
(39-54) E		
(21-38) F		
(1-20) G		
Not energy efficient - higher running costs		
	69	78
England & Wales		
	EU Directive 2002/91/EC	

Agents Note: Whilst every care has been taken to prepare these particulars, they are for guidance purposes only. All measurements are approximate and are for general guidance purposes only and whilst every care has been taken to ensure their accuracy, they should not be relied upon and potential buyers are advised to recheck the measurements.

**SPACE**  
RESIDENTIAL